

STORM SEWER MAINTENANCE HOLE DETAILS			
STM MH#	LID ELEV.	PIPE INVERTS	STRUCTURE SIZE
CBMH1	241.76	240.079N 240.079S	1200mm Ø
CICB1	241.70	240.546W	600 x 600
CICB2	241.70	240.530E	600 x 600
CICB3	241.70	240.482E	600 x 600
CICB4	241.70	240.497W	600 x 600
CICB5	241.70	240.432E	600 x 600
CICB6	241.70	240.450W	600 x 600
MCB1	241.70	240.115S	600mm Ø
MCB3	241.73	240.064N 240.064S	600mm Ø
MCB4	241.76	240.148S	600mm Ø
MCB5	241.76	240.123N 240.123S	600mm Ø
MCB6	241.76	240.125N	600mm Ø
MCB7	241.76	240.121W	600mm Ø
R1	242.42	240.065E 240.065N	600mm Ø
R2	241.84	239.997S 239.997W 239.997E 239.997N	1200mm Ø
R3	241.96	240.030N 240.030E	1500mm Ø
R4	241.79	239.911S 239.911N	1500mm Ø
R5	240.83	239.870S 239.840W 239.840E	1200mm Ø

SANITARY SEWER MAINTENANCE HOLE DETAILS			
SAN MH#	LID ELEV.	PIPE INVERTS	STRUCTURE SIZE
EX. SANMH	243.31	238.249E 238.189N 238.219S	1200mm Ø
S1	241.75	238.758S	1200mm Ø
S2	241.90	238.697N	1200mm Ø
S3	241.80	238.590N 238.590S 238.540W	1200mm Ø

THE LID ELEVATIONS SHOULD BE CONFIRMED WITH THE GRADING PLAN. IF THERE IS A DISCREPANCY, THE GRADING PLAN SHALL TAKE PRECEDENCE.

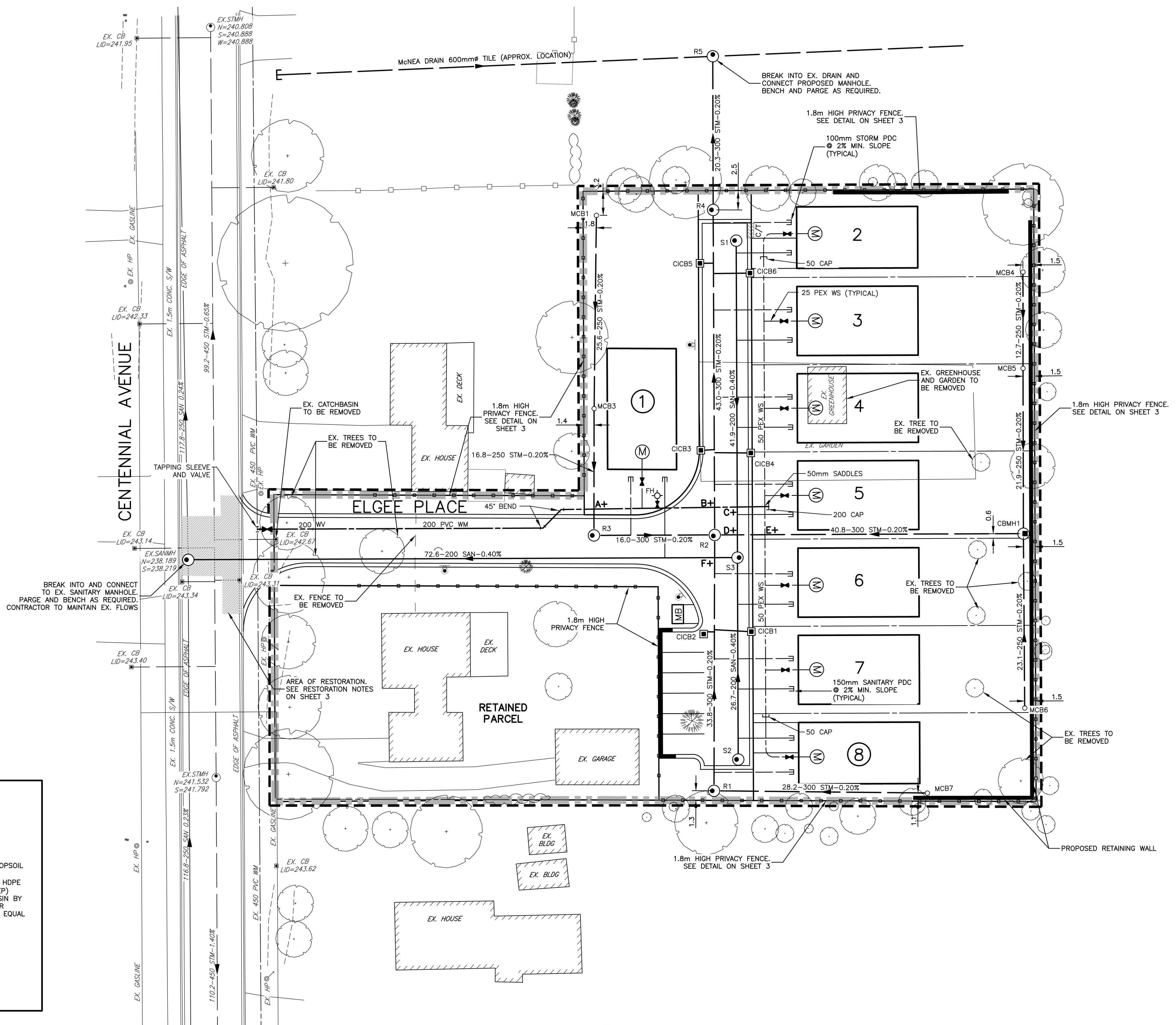
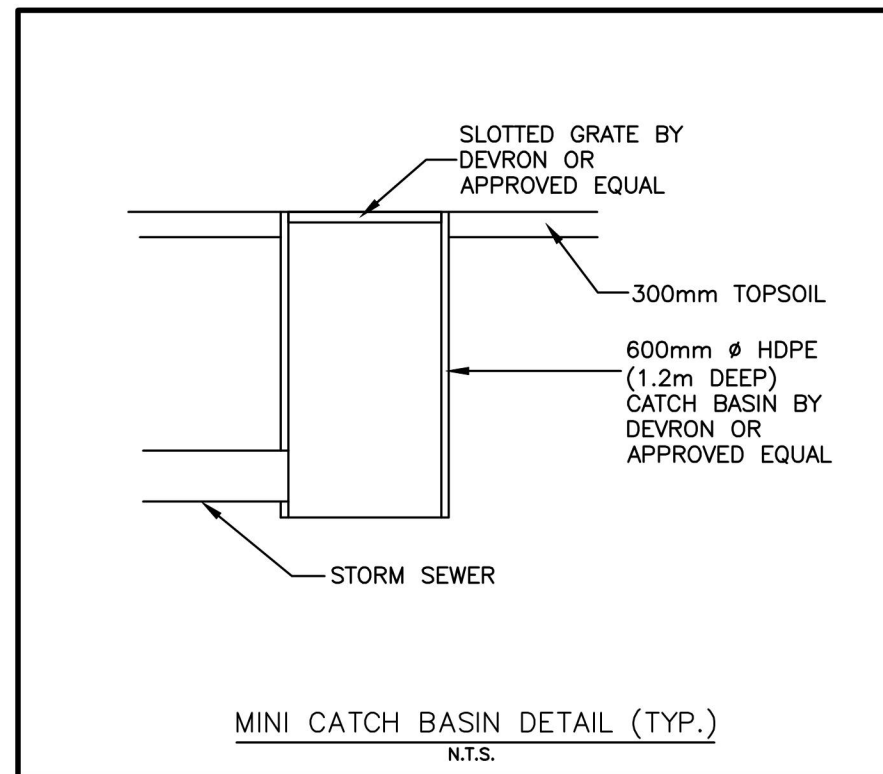
CROSSING SEPARATION CHART				
LOCATION	OBVERT ELEV.	INVERT ELEV.	SEPARATION	OFFSET REQUIRED?
A+	WM	STM		
	240.29	240.037	-0.25	YES
B+	WM	STM		
	240.099	239.99	-0.11	YES
C+	SAN	WM		
	238.817	239.879	1.06	NO
D+	SAN	STM		
	238.802	240.003	1.20	NO
E+	WM	STM		
	240.147	240.01	-0.14	YES
F+	SAN	STM		
	238.727	240.003	1.28	NO

Offset requirements to be installed as per Municipality of Central Elgin

THE LID ELEVATIONS SHOULD BE CONFIRMED WITH THE GRADING PLAN. IF THERE IS A DISCREPANCY, THE GRADING PLAN SHALL TAKE PRECEDENCE.

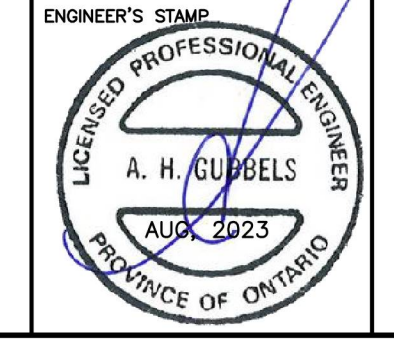
**LEGEND:**

- PROPOSED STORM MANHOLE
- EX. STORM MANHOLE
- ⊙ PROPOSED SANITARY MANHOLE
- ⊙ EX. SANITARY MANHOLE
- CB PROPOSED CATCHBASIN
- EX. CATCHBASIN
- ⊙ CBMH PROPOSED CATCHBASIN MANHOLE
- MCB PROPOSED MINI CATCHBASIN
- DEVELOPMENT BOUNDARY
- MB COMMUNAL MAILBOX
- EX. STORM SEWER
- PROPOSED STORM SEWER
- EX. SANITARY SEWER
- PROPOSED SANITARY SEWER
- EX. WATERMAIN
- PROPOSED WATERMAIN
- ⊙ FIRE HYDRANT
- ⊙ WV PROPOSED WATER VALVE
- ⊙ WATER METER AND BACKFLOW PREVENTER
- 59 PROPOSED UNIT NUMBERS
- PROPOSED LIGHT STANDARD
- ▨ C/T CURB TRANSITION
- A+ CROSSING CLEARANCE LOCATION



Z:\LD-00303 - 216 CENTENNIAL AVE., CENTRAL ELGIN\DETAIL DESIGN\A0303\_01-02\_SERVICING & GRADING PLAN.DWG

EXISTING SERVICES	DRAWING #, SOURCE	DATE	CONSTRUCTED SERVICES	COMPLETION	DETAILS	No.	REVISIONS	DATE	CONSULTANT
					DESIGN AS/MG				
					DRAWN BY MG				
					CHECKED KU				
					APPROVED AG				
					DATE 2023-08-31				



TITLE: 216 CENTENNIAL AVENUE  
LEN GRAAT

SITE SERVICING PLAN

PROJECT No. LD-00303  
SHEET No. 1 of 3  
PLAN FILE No.